

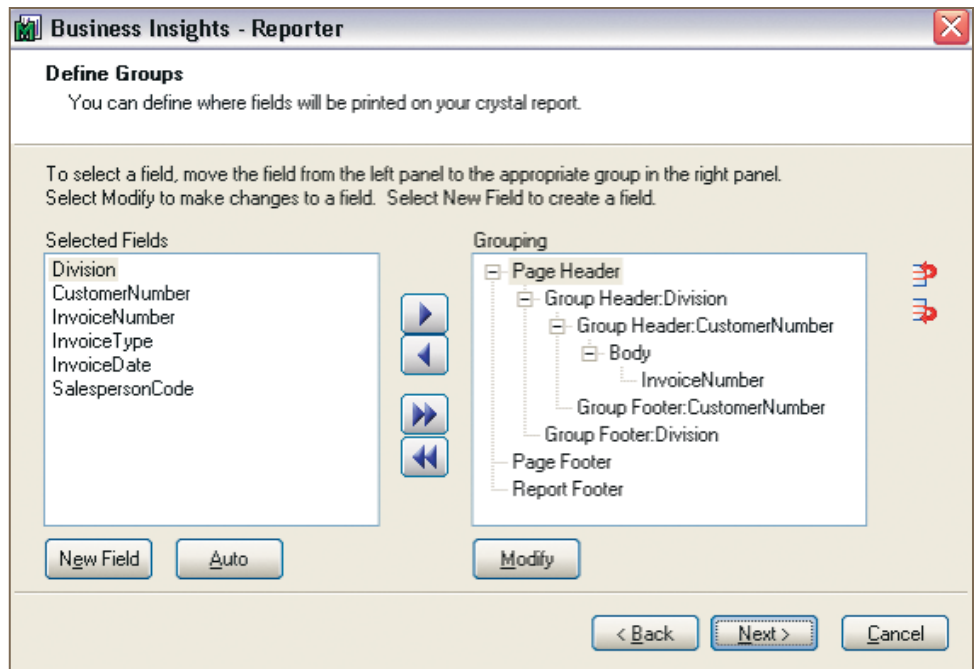


**SAGE MAS 90 SAGE MAS 200**

**4.0 ENHANCEMENTS**

**SOME OF THE  
SIGNIFICANT NEW FEATURES  
AND BENEFITS**

With the highly anticipated 4.0 enhancements, you'll achieve even more decision-making insights and increase your competitive edge. These key enhancements further streamline the ease of use that Sage Software customers have come to know and expect, while adding functionality that makes good business sense in today's fast-paced, service-oriented world.



**Business Insights Reporter**

The ability to create custom reports is an important component of any business management system, but not everyone has the time to learn the intricacies of data structures or the complexities of creating formulas. New with the 4.0 release of Sage MAS 90 and Sage MAS 200 ERP systems is Business Insights Reporter, a powerful yet easy-to-use tool for creating custom reports. Now you can enjoy the same ease and power of the classic Report Master module in a wizard-driven environment, with the added benefit of presentation-quality output and formatting options of Crystal Reports®.

**Creating a report is easier than ever before:**

**Data is presented in logical views** – no need to try to figure out what table to get data from or how to link to additional data for your report.

**Wizard-driven reporting** – wizards guide you through all of the required steps to create a report.

**Choose your format** – output reports to multiple formats, including Excel, Adobe PDF, or XML.

**Easily create calculated fields** – simple point-and-click calculations based on our very successful Advanced Lookup Engine Customization Wizard.

**Secure access to your data** – determine which user roles will have access to reports.

**Powerful features retained and enhanced for power users:**

Create links to additional data sources.

Use Crystal Reports design interface to enhance reports generated by Business Insights Reporter Wizard, or create new reports completely within the Crystal Reports application.



*"What I find remarkable about Sage MAS 200 is that its upgrades are so well integrated. As a result, Hansen's has been able to grow efficiently with Sage MAS 200 in place for more than a decade."*

Tom Kelly, Controller  
Hansen Natural Corporation

## Global Enhancements

### Security Enhancements

Security is an important aspect of any software system where sensitive financial information resides.

**Sage MAS 90 and 200 4.0 include role-based security** – a very flexible security system that allows you to choose exactly who has access to your data, without requiring a large effort to implement. Assign users to one or more roles, such as payroll supervisor or accounts payable clerk, and then assign rights to these roles.

In General Ledger and Library Master you may further refine access to the various tasks users perform. For example, maintenance and data entry programs such as Account Maintenance and General Journal Entry enable you to select specific attributes, including Full Control, Create, Modify, Delete, and View Only. These can be set for each program within a particular role, allowing the administrator exceptional control over who can create, modify, or delete entries.

### Enhanced Wide Area Network Support

Version 4.0 of Sage MAS 200 includes the following enhancements for WAN (Wide Area Network) deployment:

- Compatibility with firewalls that use Network Address Translation (NAT).
- Traffic between the client and host may optionally be SSL encrypted to help ensure data security.
- Client/server connection enhancement for higher fault tolerance, resulting in fewer dropped connections.

### General Ledger Enhancements

Your General Ledger module is the foundation of your business management software. With the 4.0 release, the Sage MAS 90 and 200 General Ledger sets new standards for flexibility and speed of entry. At the same time, many customer-requested capabilities have been added to the system—adding more power to run your business smoothly and effectively:

- Data entry is faster and can easily be personalized to individual workflow needs with our new dual-grid design. We conducted usability tests with customers like you to make our data entry the best in the industry. With the new Grid Entry, you can personalize in the following ways:
  - Resize columns
  - Move columns between grids, according to how often you need to use them
  - Easily add, delete, and reorder lines
  - Sort and hide columns within the grid

**General Journal Entry (ABC) 4/18/2003**

Source Journal: JE    Entry Number: 000019

Copy From...    Copy Standard...    Save Standard...

1. Header    2. Lines

	Acct No.	Debit	Credit
1	00530-60-03-000	1,225.00	.00
2	00530-30-03-000	.00	522.00
3	00530-20-03-000	.00	703.00
4		.00	.00

Description: Insurance expense: ACCTG-CENTR  
Comment: Expense distribution

Quick Row: 3

Debits: 1,225.00    Credits: 1,225.00    Net Balance: .00

Accept    Cancel    Delete



- Another important capability in data entry is the ability to reset individual lines, or return all modified lines, back to their original values at the beginning of the session, should manual errors occur during entry.
- **Usability Enhancements in General Ledger** – The Grid Entry is only the beginning of all the great enhancements you will see in Sage MAS 90 and 200 4.0. We have added many usability features to help make your staff more productive—and it’s all part of your current Subscription Plan. Right click to find pertinent information such as:
  - System Information:
    - Company code and company name
    - User code and user name
    - Module date
    - Number of records in main file
    - Records will display “created by” as well as date information where appropriate
  - Related Tasks – Allows you to easily navigate through the system without missing a keystroke. For instance, you can request to see information in Related Tasks for everything associated with Account Maintenance (Of course information is only accessible to authorized users).
- **New Company Set Up Wizard** – Whether you are new to Sage MAS 90 or you are adding a new company, the new Company Setup Wizard will walk you through the process of selecting key information for your general ledger. An example of this would be choosing your account structure from a list of sample chart of accounts.
- **Expanded General Ledger Account Number** – Now you can create a Chart of Accounts with up to 32 characters and 10 segments!
- **Enhanced Numeric Capacity** – Individual transactions up to \$999,999,999.99, account balances up to \$9,999,999,999.99, and financial reporting totals up to \$99,999,999,999.99 are now supported.
- **Financials Statements** – A wizard steps you through creating financial statements. Additional financial statement formats are available, and financial reports can be grouped for streamlined printing.
- **Unlimited Budgets** – Save all of your historical budgets for reporting purposes, while building budgets for future fiscal periods in a new, easy-to-use grid.
- **Allocations** – Basis Allocations allow you additional flexibility when setting up allocations. You can now create allocations based on revenue, square footage, headcount, and more.
- **Start or End Active or Inactive Accounts** – Now when you want to modify your General Ledger accounts and switch to a new numbering system, it’s easy to specify when old accounts become inactive to avoid accidental postings.



*“With Sage MAS 90, we have a system that we can always upgrade, but never outgrow.”*

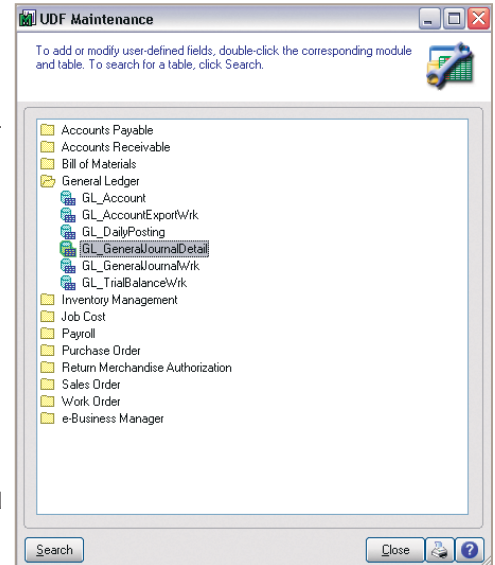
Teri Heintz, Controller  
Secory Oil



# Sage MAS 90 and Sage MAS 200

## 4.0 Enhancements

- **Roll Up Codes** – Add power to your Chart of Accounts by assigning Roll Up Codes for additional grouping. Roll Up Codes may be selected to print on selected Financial Statements.
- **Saved Reports Settings** – Predefine selection options for each report in the General Ledger, including sort, filter and printer selections, and save it with a unique name. This makes running reports faster and prevents incorrect selection criteria during report printing.
- **Batch Manager** – Optionally, you can set up batches during data entry for more control of what is posted to the General Ledger.
- **Calendars and Calculators** – Wherever you need to enter a date or an amount in the General Ledger, you can click on a calendar or calculator. The selection you make will automatically populate the field selected, saving time and potential data entry errors.
- **Journal entry comments retained in history** – Reprint journals exactly as they originally appeared, including all the detailed comments.
- **Post bank transfers in one easy step** – Transaction Journal Entry allows you to transfer between bank accounts using a simple entry that posts to both your General Ledger cash accounts and your bank codes in the Bank Reconciliation module.



### Customizer Extensions

- **Enhanced User-Defined Fields (UDFs)** – May be defined for any General Ledger table (data file). Business Insights Reporter automatically adds UDFs to corresponding data views for instant availability.
- **User-Defined Tables (UDTs)** – Create new tables for validation of UDFs and selected existing fields. Data in UDTs may be displayed in a Windows format or used in Crystal Reports.

### About Sage Software

Sage Software (formerly Best Software) offers leading business management software and services that support the needs, challenges, and dreams of more than 2.4 million small and mid-sized business customers in North America. Its parent company, The Sage Group plc (London: SGE.L), supports 4.5 million customers worldwide. For more than 25 years, Sage Software has delivered easy-to-use, scalable, and customizable software for accounting, customer relationship management, human resources, time tracking, and the specialized needs of accounting practices and the construction, distribution, manufacturing, nonprofit, and real estate industries. For more information, please visit: [www.sagesoftware.com/moreinfo](http://www.sagesoftware.com/moreinfo) or call 866-308-2378.